

MONTHLY MEMBERSHIP PROGRESS REPORT

District 38 N

Results as of: 3/31/2026

GMT:

LOCATION NEBRASKA

GMT CA

Clubs			
RESULTS FOR 2025-2026			
QUARTER	NEW CLUB GOAL	NEW CLUBS	DROPPED CLUBS
JULY/AUG/SEPT	0	0	0
OCT/NOV/DEC	1	0	2
JAN/FEB/MAR	0	0	0
APR/MAY/JUNE	0	0	0

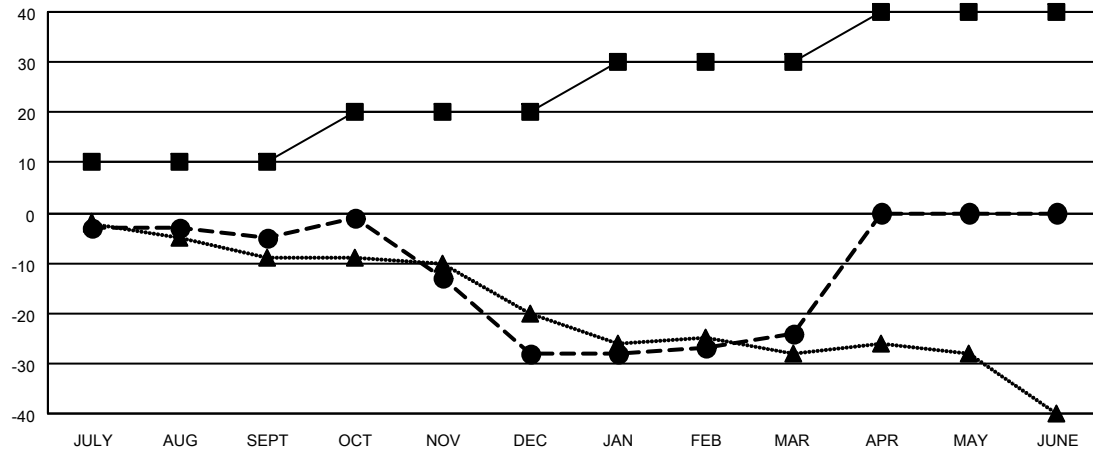
Members			
RESULTS FOR 2025-2026			
QUARTER	MEMBER GROWTH NET GOAL	MEMBER GROWTH ACTUAL	DROPPED MEMBERS ACTUAL (including transfers)
JULY/AUG/SEPT	10	6	9
OCT/NOV/DEC	10	13	33
JAN/FEB/MAR	10	12	7
APR/MAY/JUNE	10	0	0

GOALS AND ACTUAL NEW CLUBS CUMULATIVE



- - CURRENT YEAR GOALS FOR NEW CLUBS
- - CURRENT YEAR ACTUAL NEW CLUBS
- ▲ - LAST YEAR ACTUAL NEW CLUBS

GOALS AND ACTUAL MEMBERS CUMULATIVE



- - MEMBER GROWTH NET GOAL
- - MEMBER GROWTH ACTUAL
- ▲ - LAST YEAR MEMBERSHIP ACTUAL

DROPPED CLUBS: 2	8 CLUBS OF 28 ADDED 1 OR MORE NEW MEMBERS	GENDER DISTRIBUTION
		MALE 427 (68.43%)
		FEMALE 197 (31.57%)
DROPPED MEMBERS	CLICK HERE FOR CUMULATIVE MEMBERSHIP DATA	TOTAL FAMILY UNIT MEMBERS 123
DECEASED 12		FAMILY MEMBERS PAYING HALF DUES 62
CLUB CANCELLED 5		
OTHER 32		
TOTAL 49		